

Camera Obscura (Wikipedia) - early attempt at photography!

Editorial

Someone asked me the other day what my favourite photographic genre is and I had to think long and hard before deciding that I don't actually have a favourite! I enjoy all of them and I find that much the same photographic skills are required no matter which genre you are involved with. For instance, what different skills are needed to capture a bird in flight (Nature) or a speeding race car (Sports)? How does a Landscape differ from a Portrait? Travel from Street? It doesn't really matter what image you are trying to capture, you need to understand all the basics – and apply them! What is Depth of Field and how to vary it. How to freeze

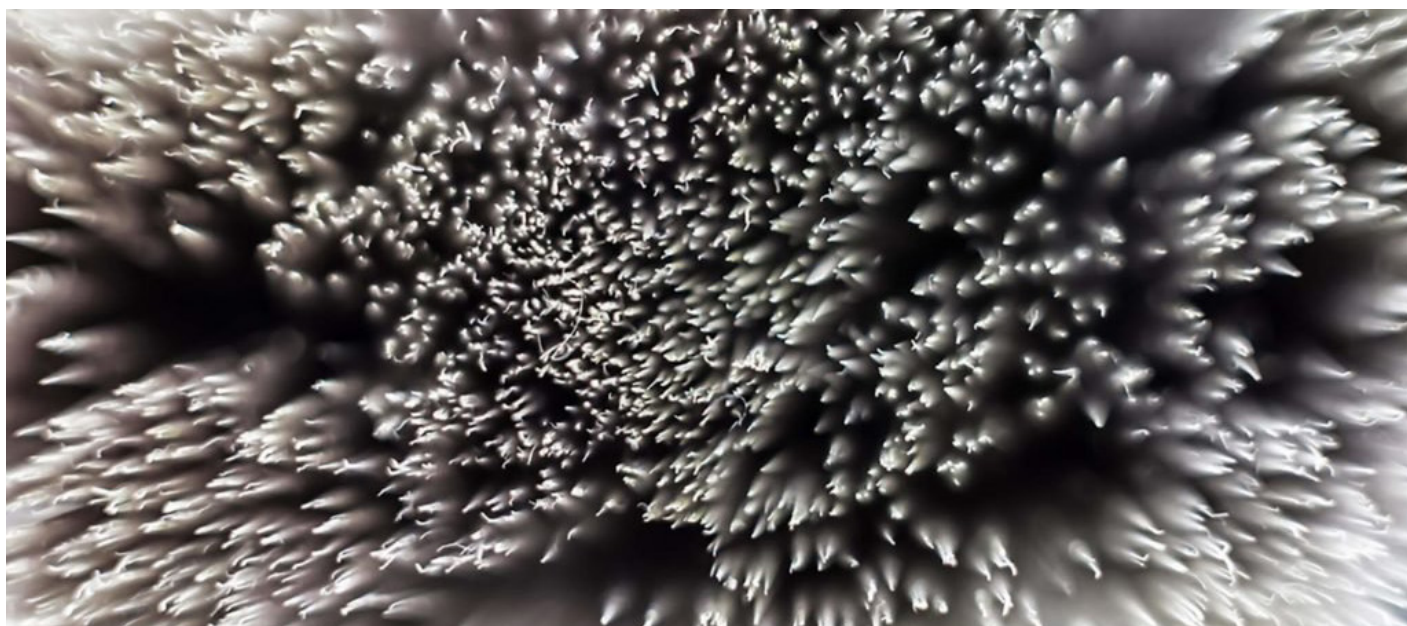
action – or blur it to give the impression of movement. How to make sure your image is sharp and in focus in the parts that matter. How to frame a subject for the best impact. How to manage lighting and exposure. All this leads to the reasons for joining a camera club! By so doing, you will meet people of similar interests and with a range of knowledge from beginner to expert and they will all be happy to share what they know. And if you aren't too sure, just submit some images for evaluation and the critiques will point out things you may have overlooked and praise you for the things you've excelled at. Photography is something that you have to immerse

yourself in and do not be afraid of peer review, it's the process whereby you find out if what you are doing is on the right track. So go to it and let's see a few more people submitting images each month!

This month also sees some new features implemented: "The Story Behind" which features a special image from a contributor with a back story explaining how it came about and the story behind it. Paul Byrne has provided the image and explanation this month. After that, you will see "Tips and Tricks" where Trish McAuslan has provided instructions for Top Mounting this month.

Neville

Exercise your brain!



Can you identify this everyday object?

Last month was a Dandelion head! Did you get it?

**The Club Meets @7.30pm on the 1st and 3rd Thursday of the month
(February to November)**

**@ Arts & Craft Centre, 177 Elizabeth Street West,
Tauranga.**

Visitors are welcome.

Club Web Site: taurangaphoto.nz

Contacts:

President:	Annette Johnston	president@taurangaphoto.org
Vice President:	Paul Byrne	paul.byrne@xtra.co.nz
Secretary:	Trish Peddle	secretary@taurangaphoto.org.nz
Membership:	Richard Baldwin	tpsmembership@gmail.com
Newsletter Editor:	Neville Harlick	tpsnewseditor@gmail.com
Webmaster:	Ross Larsen	webmasterf8@gmail.com
Treasurer:	Ingrid Ronner	treasurer@taurangaphoto.org.nz
Evaluations:	Ian Purden	evsectps@gmail.com

From the President's Desk



I am trying (and failing) to remove the words 'I am busy' from my vocabulary. Not only are they still in my vocabulary, my life is still busy!

...but I think I need to undertake a mind shift – busy is good, busy means I am occupied, I am thinking I am engaging with a myriad of people, I am challenging myself daily, weekly, monthly, I am learning (sometimes too slowly) but still I am learning. My mind shift needs to be around how I view what is necessary. To take a walk (fast or slow), to have time to talk to friends and family, to read a book, to make a new recipe, to knit a woollen cardigan for a new grandchild, to sit and do nothing, to wait for a sunset, to get up for a sunrise, to create images; these things are 'good busy'. I think that I sometimes confuse simple doing for doing with purpose.

...obviously, I am not a phi-

losopher so I will stop now.

With February, almost behind us we have successfully managed two evaluations under the new system. I am sure that I can speak for all evaluation panelists and say that the early finish of 9.00pm on evaluation night was greatly appreciated. As the person responsible for the feedback, writing up 21 was much more palatable than facing 50. I hope all those who do make submissions are finding the one open and one set subject ratio more challenging to your individual photographic skills as you undertake the different genre (set subjects) throughout this year.

On the first day of March our new website taurangaphoto.nz went live. All of you should have received a letter by email with the new log-in instructions. Please explore the new site and find out what you can and can't do (and let us know). This is a work in progress, and no doubt it will grow and develop as we customise it to better meet our requirements. You will be entering your April evaluation images from the new webpage. Hopefully, you will simply be able to follow the instructions. The size of your images remains 1900 x 1200px at a resolution of 72 DPI.

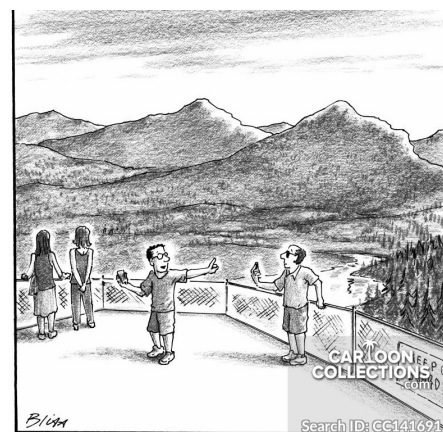
Vice President Paul Byrne and I will be holding two evening workshops (8 and 12 March) for new members,

and some not so new members, with a view to assisting more of you to have the confidence to put images into our evaluation system. These workshops will continue from time to time throughout the year as a continuation of the C Graders evenings we held in 2018.

March is also the month when those who have applied for PSNZ Honours receive what is hopefully a letter confirming their success. As a recipient of one such letter and two others that were of the 'dear john' variety, there is much to be learnt by the process of producing a panel, and this is knowledge that is not wasted. I will take this opportunity to wish all those who have been brave enough to attempt an Honours, every success.

"Life is not a dress rehearsal – wake up every day excited to live out your purpose"

Andrew Wommack



"Hold on, let me get a picture of you taking a picture of yourself while Gail takes a picture of both of us taking pictures."

Upcoming Club Events

Double-up on Workshops Two Days of Workshops with Gail Stent and Judy Stokes

Dates:	To be advised. An email will go out to everyone once they are finalised.
Time:	10.00 am – 5.00pm (Both days)
Venue:	Tauranga Art and Craft Centre, 177 Elizabeth Street, Tauranga
Hosts:	Tauranga Photographic Society
Tutors:	Gail Stent www.gailstentphotography.com Judy Stokes https://judystokesphotography.com
Price:	\$60 pp per day
Refreshments:	Bring your own lunch. Tea and Coffee will be provided.
RSVP:	Annette Johnston - aj@heddfan.co.nz Please reserve your place by emailing Annette and noting which workshop you wish to attend on which day. Places are strictly limited. (Payment options will be notified to individual attendees)

Participants can choose to attend
one or other workshop on Saturday 30 March, or
one or other workshop on Sunday 31 March, or
attend one workshop on Saturday and then the other on Sunday

Workshop Subjects:

- A. 10.00am – 1.00pm Introduction to Lightroom: Catalogue and Editing
2.00pm – 5.00pm Creative Photoshop
- B. 10.00am – 1.00pm ICM (In Camera Movement)
2.00pm – 5.00pm Post Production Workflow

What to bring:

- Camera and fully charged battery
- Formatted card in the camera
- Camera USB cable or card reader to import images.
- Laptop with Adobe Lightroom or Lightroom Classic CC fully loaded and in use (preferred is Adobe Creative Cloud)
- Laptop, charger and Mouse
- Notebook and Pen / Pencil (notes will be handed out to students as well)

Upcoming Club Events - continued

The new web site is now operational! Check it out!
taurangaphoto.nz

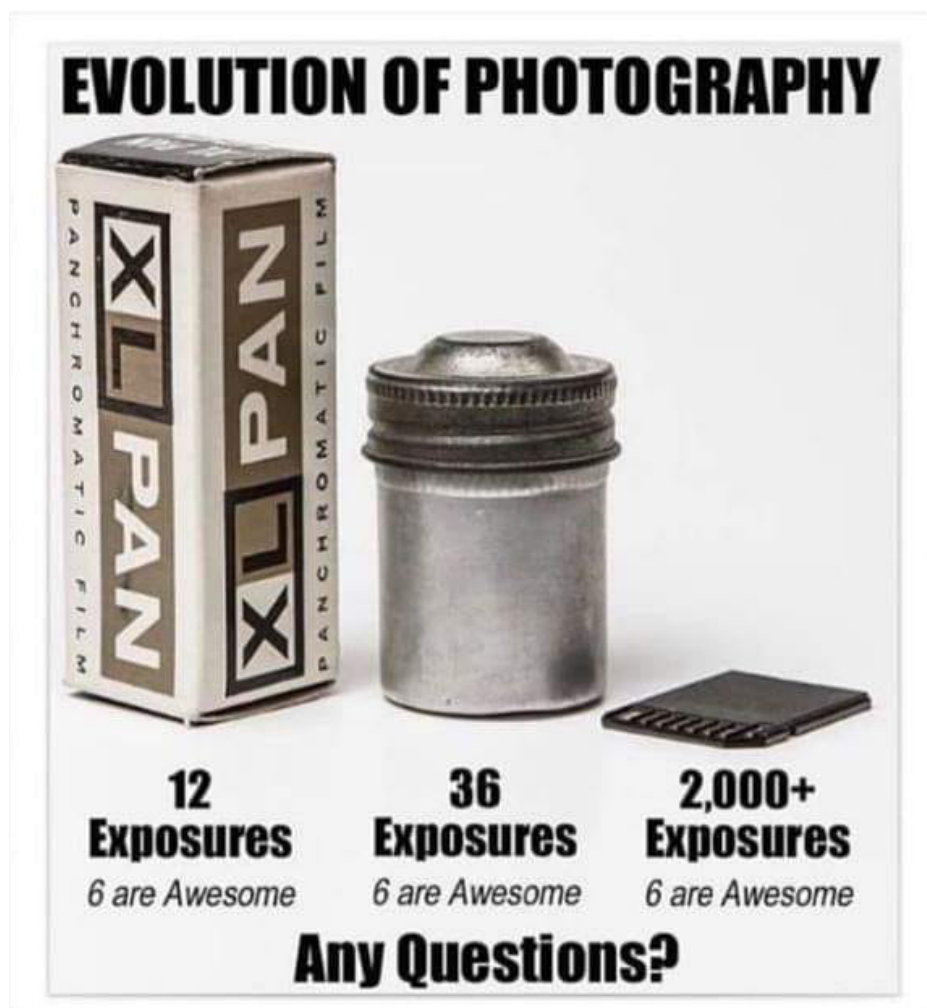
Club Programme

Our club is so lucky to have these talented photographers who are willing to share some of their photography. Check out the club website to find out the topics they have chosen to speak on.

7th March: Ian Saunders

21st March: Marie Bilodeau LPSNZ, and Jeanette Nee APSNZ

4th April: Annemarie Clinton and Karl Tretheway



Set Subjects for Evaluation

April: Entries close at midnight on Sunday 31st March

Prints (1 Set Subject and 1 Open) Environmental Portraiture

Last year the equivalent set subject was either a portrait or an environmental portrait and this caused quite a bit of confusion as in many ways they are opposites. This year it is only an environmental portrait. There is a link to an excellent U-tube video in the expanded guidelines on the website and I recommend everyone to watch it before they go out photographing or choosing their photos to enter.

Digital (1 Set Subject and 1 Open) Up close

There are some very good tips for macro photography on the website. You do not have to have a macro lens, you can use the telephoto end of your zoom lens - longer ones are better.

Because you are often working with a shallow depth of field in close up photography it is hard to get the point you want in focus actually sharp. Preferably use a tripod. If that is not possible stabilise yourself in some way and take lots of photos hopefully getting one sharp where you want the sharpness to be. If you are not able to get outside to photograph there are some ideas for indoor close up photography in this video https://www.youtube.com/watch?v=hzCgNh_o25c.

May: Entries close at Midnight on Tuesday 30th April

Prints (1 Set Subject and 1 Open) Nature

Please read the guidelines for this set subject. They tell you what you can and cannot do. If you look up the rules for nature on the internet you will find a variety of definitions. In photography you need to read the rules for submitting nature photographs. In our club we are using the same definition as PSNZ

uses and it is similar to the international photo competitions. There is a difference between nature images and wildlife. Nature images can be taken in a controlled environment like a nature park or reserve such as Tiritiri Matangi. Note this does not include domesticated animals like deer in a paddock. Wildlife however, is taken of the subject in its natural environment without interference from humans. When photographing nature do your best to avoid man-made objects like a road or fence in the photo unless it is part of the natural habitat of the subject eg the terns nesting on the piles of the old Hairini Bridge or swallows nesting under the eaves of a building. When photographing landscapes for a nature competition it is not the landscape

that is important but the landforms within the landscape. For example Mt Ruapehu can be photographed for both nature and a landscape. For nature it should be labelled with the landform eg Mt Ruapehu - volcanic cone or even better Mt Ruapehu - composite volcano. Be very careful with U-tube and other tutorials on the internet as they often interpret nature differently from the guidelines for this set subject.

Here is another U-tube video which has some great tips for wildlife. Just remember that wildlife is a common subject for nature but there are other things that you can photograph for this set subject

10 Tips for Photographing Wildlife

<https://www.youtube.com/watch?v=SniorcO1Hc0>

Digital (1 Set Subject and 1 Open) Landscape

There are some excellent notes in the expanded guidelines and the u-tube video in the expanded notes on the club website - check it out.

Caption Competition



Winning entry from the last issue is “The Definition of Happiness is...” from Matt Dunn.

Runners up are “Race, what race? I’m here for the food” from Sue Crompton and “Clearly not on the Keto diet” from Vivianne Baldwin.

Thanks to the others who submitted captions too.

And here’s a new one to challenge your imagination! Send your captions in to tpsnewseditor@gmail.com



The Story Behind.....



STORY BEHIND THE IMAGE

by Paul Byrne FPSNZ, ARPS, AFAIP

Most of you, if not all, will know me. You will have seen a plethora of my work over the years. Most of you will think of me as a portrait, creative or documentary style of photographer, particularly as these were the genre used to gain my various PSNZ honours. I also take sports images, however these seem to be less appreciated in the amateur photographic world. This is not a complaint, merely an observation. Thus it is that I decided to be different with my choice of photograph for this back-story.

Above is an image of Emma Gilmour driving her rally car during the International Rally of Whangarei. Emma is not only New Zealand's top female rally competitor, she is also the World's fastest female rally driver. A fact little known or appreciated by New Zealanders. Top drivers from around the World compete at this event and Whangarei is one of only two rallies held in NZ which have night time stages.

Media Photographers from around the world come to this event in support of international teams and sponsors. My goal was to shoot a different image from the accepted norm. I

had obtained Media Accreditation and was permitted to work freely in all stages. This particular stage is held in Whangarei's William Fraser Memorial Park which runs alongside the Hate-a River. The Te Matu A Pohe swing bridge is closed for the duration of the stage and members of the public flock to the bridge which provides a great viewpoint. I positioned myself inside the park so that the swing bridge, with hundreds of spectators watching the event, was visible in the background. I should point out that there was no lighting within the park. The only light available is supplied by the street lights along the bridge, rally car headlights and photographers using flash equipment. Apart from that the park is in total darkness.

I was about 3 feet from Emma's car which was travelling in excess of 100kph at this point. I used a 15-30mm wide angle lens on my Nikon D4 camera. I panned and zoomed whilst simultaneously an off camera flash was triggered. I love the resultant effect. It indicates action and speed. Sponsors like it because it shows the names of the driver, co-driver and sponsor together with an indication of the location and thrill of the event. I also like the bokeh effects in the image.

Evaluation Results - Digital and Print

In accordance with the new rules, only the best image (in the judges' opinion) in Set Subject and Open for both Print and Digital are displayed in the Newsletter. To see how the other images fared, you must log on to the new website.

1. Who's looking at who? by June Kidd. Set Subject, Digital, Honours



2. Jetty at sunshine coast by Lorraine Jones, Set Subject, Print, Honours



3. In Daddy's Hands by Annette Johnston. Set Subject, Print, Honours



4. Little Mermaid by Annemarie Clinton. Open, Print, Honours



Tips and Tricks

Top Mounting

This is mounting your image on top of the backing board without first cutting a hole. This image has been top mounted on black board. The white edge on the photo represents the white core of a backing board which shows when the hole is cut.

When it would be useful:

When you have cropped your image to an unusual shape eg a panorama and you don't have a mat board to fit it.

When you want to mount two or more images on the same backing board.

Disadvantages:

If you make a mistake it is immediately noticeable.

Depending on how you attach the photos, you may not be able to reuse the backing board.



Materials:

Backing board - preferably white or black and firm enough to stand up on the display racks. This could be mat board bought from the club or another piece of suitable card-board.

Sharp craft knife eg stanley knife

Steel ruler

Old paper or similar to cut the image on

Adhesive: blue dots which can be removed, or glue which is permanent, or double sided sellotape or photo splits.

Preparation:

Prepare your photo in the normal way

Finish it with a narrow black line or double black line - particularly if you have white right on the edge of the photo. Print it allowing a white border around the photo. If you have used a single black line, allow a narrow white border around the photo. Cut away the surplus paper. This represents the white core of traditional mat board.

If you have added a double black line with white between them carefully cut around the outside of the line. When mounted on a black board this will look



Tips and Tricks - continued

like there is just the white edge.

Note: It is very important that the line is absolutely straight as the viewers eyes will see any imperfections. This is why it is cut with a steel ruler and sharp knife rather than scissors. For the same reason it is essential that the width of the white area is exactly the same on all sides.

Mounting

If you use blue dots or photo splits, put one right in each corner so the corners don't lift, several down each side and some in the middle.

Double sided Sellotape: carefully put the tape along each side close to the edge.

Glue: make sure you include the corners.

Hint: Use a pin to carefully mark the position of each corner of the photo on the mat board. Use a ruler to ensure it is centrally placed and the edges are parallel to the edge of your mat. You will not be able to see the pin marks once you photo is mounted.

Carefully place the photo onto the mount. Once you have put your photo in place you cannot shift it except if using blue dots. But then you have to shift the photo, remove the dots and try again.

That's all there is to it!

That's all, Folks!